

Appendix A

LGA informed Senior Leadership Structure

April 2024

Strategic Management Board (SMB) structure
under former CX and Growth Director

**Chief Executive &
Growth Director**

Director
Housing &
Customer
Access

Director
Communities

Director
Comms,
Tourism and
Marketing

Director
Corporate
Services

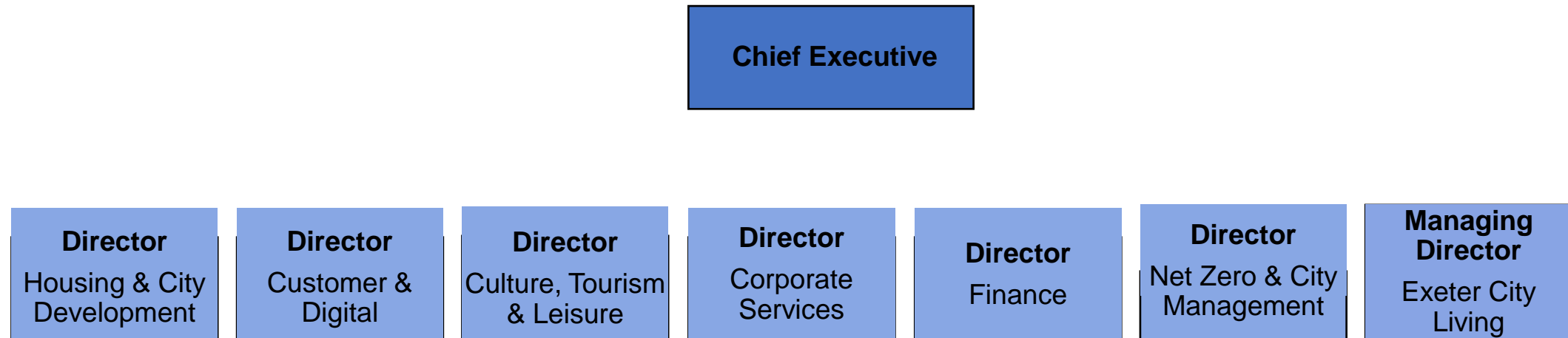
Director
Finance

Director
Street Scene

Director
City
Development

**Managing
Director**
Exeter City
Living

Current SMB structure



Proposed SMB Structure

